

# Catchment 12: Somerset Levels and Moors

All applications from farmers within the catchment are welcome. Applicants should note that funding is limited and if the total amount of grant applied for by all applicants exceeds the available budget, grants will be allocated to those applications within target areas and which include high priority capital items.

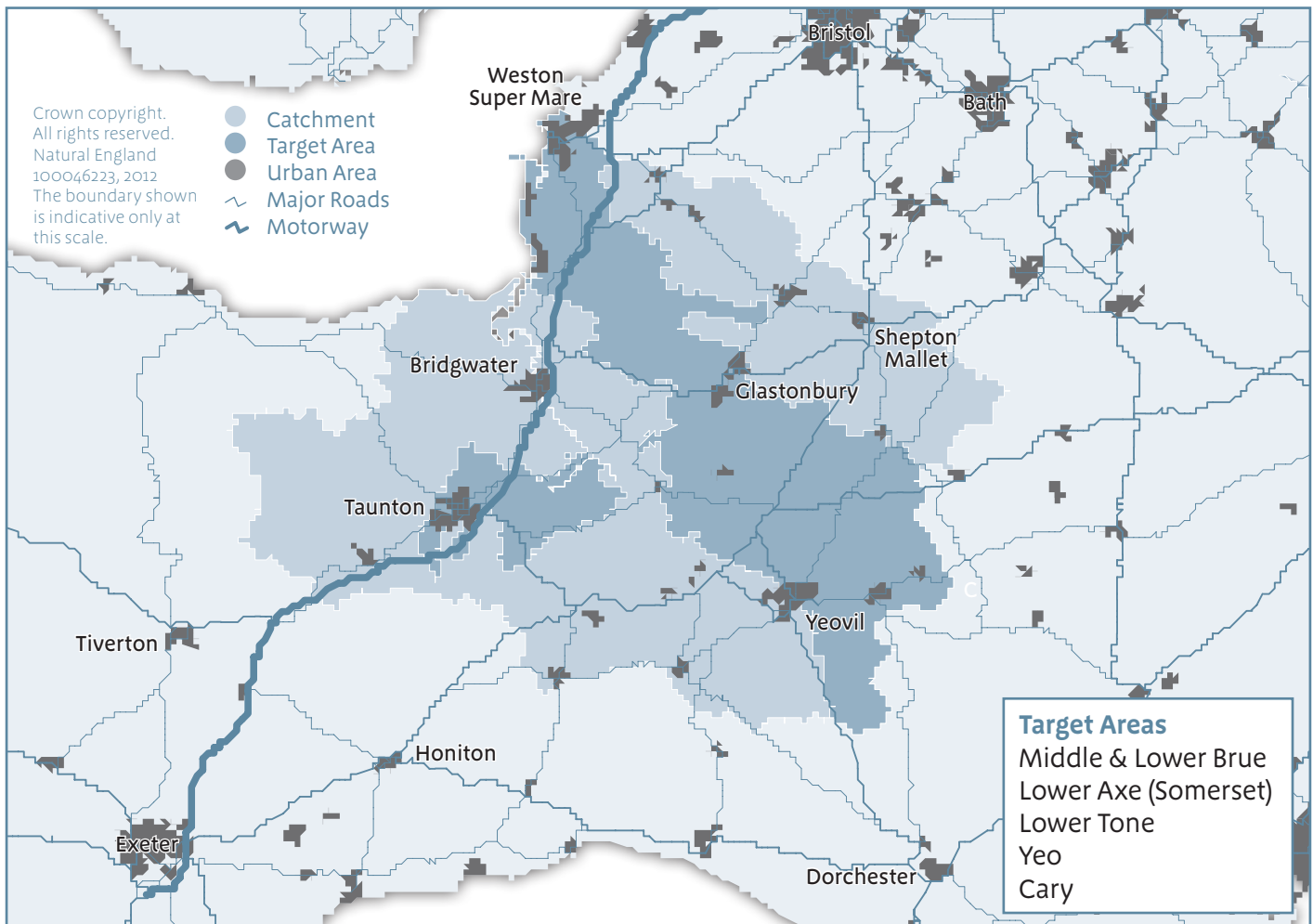
This is to ensure that grants are awarded to only those applications which best meet the scheme's priorities e.g. that address water pollution issues within catchment target area(s) and will deliver the greatest environmental benefit. If the scheme is oversubscribed, additional prioritisation criteria will also be considered.

## Target Areas

Please see indicative map for target area boundaries.

Detailed maps for individual catchments can be viewed on the MAGIC website at <http://magic.defra.gov.uk>

From the MAGIC website select the 'interactive map' tab then for Step 1 "What data you wish to view" select the 'Rural Designations-Other' button and for Step 2 "Where do you want to go" enter your postcode. This will load a map that will show if your land is in a priority catchment. You may need to turn off some of the other designations using the 'List of Layers' button next to the map to see your land area more clearly.



## Capital Items

In this catchment we are particularly interested in funding applications which aim to:

- Separate clean and dirty water in farm yards;
- Provide alternative livestock water supplies;
- Reduce sediment, nutrient and pesticide run-off from agricultural holdings;
- Control the potential damage to soil caused by vehicle wheeling and/or stock movements;
- Limit the pathways for soil wash entering the river;
- Reduce pesticide losses during sprayer loading and washdown.

The following priority capital items (Item code in brackets) will assist in delivering these aims and will be favoured in the grant application process (not listed in order of priority):

- Watercourse fencing (CSF003)
- Hard bases for livestock drinkers and feeders (CSF007)
- Livestock drinking trough with associated pipework (CSF010)
- Cross drains (CSF011)
- Yard works for clean and dirty water separation (CSF014)
- Rainwater storage tanks (CSF017)
- Livestock and machinery tracks and associated livestock fencing (CSF021)
- Pesticide handling and biobed options (CSF022)
- Roofing of manure storage and livestock gathering areas (CSF023)
- Roofs for slurry and silage stores (CSF026)

## Further Information

For further information and advice, please contact your Catchment Sensitive Farming Officer or Catchment Partnership coordinator:

### Cary, Tone and Yeo

#### Roy Hayes

Tel: 07814 233743

Email: Roy.Hayes@naturalengland.org.uk

### Brue and Lower Axe

#### Simon Richardson

Tel: 0300 060 0706

Mobile: 07989 578809

Email: Simon.Richardson@naturalengland.org.uk

CSF5/12

## Other Prioritisation Criteria

A number of additional criteria have been introduced to assist with the prioritisation of grant applications in 2012/13. In addition to target areas and capital item priority, consideration will be given to holdings and/or applicants:

- Which have not previously received a CSF capital grant or the grant received in previous years was less than £2000 in total;
- With a current agreement under an environmental scheme for example, Countryside Stewardship Scheme, Environmental Stewardship (including Entry Level Schemes and Higher Level Scheme)
- Have already engaged with the CSF initiative or CSF partnerships in the last two years prior to submission of application. For example, attended a CSF organised event or workshop and/or received 1:1 advice and a farm visit from a local Catchment Sensitive Farming Officer (CSFO), CSF Contractor or catchment partnership partner/contractor.

These additional criteria will allow some differentiation between applications to give more opportunity to farmers who have not had grants before or have received low value grants and those who are already actively making a contribution to the environment through participation in an agri-environment scheme.



## A clear solution for farmers

CATCHMENT SENSITIVE FARMING

Catchment Sensitive Farming (CSF) is delivered in partnership by Natural England, the Environment Agency and Defra.

