

# SEND Weekly Newsletter 5 December 2018



Issue 20

## Hearing from experts on well-being



The focus is on Special Educational Needs and mental health at a major event in Somerset in the spring.

Support Services for Education has announced its 2019 conference; **Health and Wellbeing for Staff and Students**.

The all-day event takes place at Westlands Conference Centre, Yeovil on Friday 8 March 2019.

Keynote speakers include **Andrew Whitehouse**, a SEN consultant, an experienced educator having held leadership, teaching and outreach roles in a range of settings, and **Claire Eastham**, a best-selling author, who is a recognised mental health advocate, blogger and campaigner.

The packed day will involve a variety of relevant workshops and presentations from SSE services, partners and sponsors, as well as a diverse exhibition hall and an opportunity to network with colleagues from across Somerset and beyond.

Tickets are now available to all school leaders and managers across the South West at a cost of just £25 per person.

Please check out the programme of events and be sure to book tickets and sessions early to avoid disappointment.

For further details including how to confirm your place, please visit [here](#).

## Our vision for the future

The Children's and Young People's Plan 2019-2022 is now being drafted after consultations closed in the autumn.

It lays out Somerset County Council and Somerset Children's Trust and their partners' vision for children and young people across the county.

Young people have been central to the process and some of those involved will be writing up their findings during the February half term.

There were three major events and the final one focussed on parent carers and the support they need.

You can find out more about the plan and offer your views by contacting [SomersetChildrensTrust@somerset.gov.uk](mailto:SomersetChildrensTrust@somerset.gov.uk)



**New  
feature**

## A Day in My Life — Chloe-Ella Willcox: Young Person's Champion

# Learning new skills and meeting new people

I arrive at County Hall at 9 am ready to start work.

When I arrive, I check my emails and my calendar to see what tasks I need to complete and if I have any events to go to today.

I often attend meetings in County Hall as well as outside for example, today, I attended a meeting at Fiveways School about Preparing for the best adult life and how we could support students, their families and those working with them.

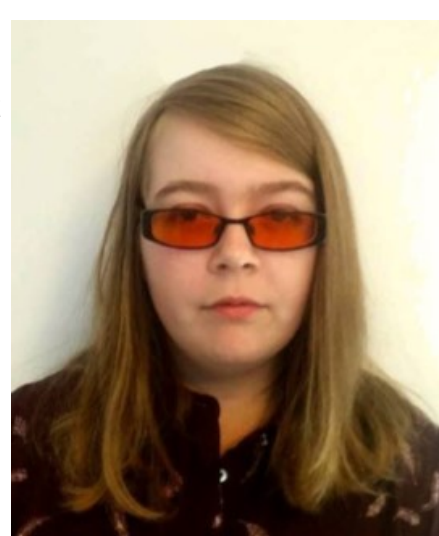
I also attend events where I get feedback from other young people so that I can voice

them during meetings. Sharing my personal experiences and struggles are an important part to of my role too.

In the afternoon, I help organise and plan activities for a group of young people with additional needs called The Unstoppables.

For our December meeting, I created targets for a game I invented called Snowball, the aim of the game is to work with other members of the group, develop communication skills and hit as many targets as possible!

I enjoy working for Somerset



County Council where I am learning new skills, meeting new and inspirational people as well as getting my voice and others heard.

## Sense-ational gifts

If you haven't checked out the latest Sense-ational seasonal business to grace Taunton's High Street please drop in.

The Sense-ational shop, supported by Somerset County Council and led by Special Educational Needs.Somerset Expertise (sen.se), with the support of charity Young Somerset, is run by young people and all the stock has been created by pupils from special schools across the county—whether it's festive gifts, decorations, ornaments, jams or beautiful works of art.

But hurry, it's running until the end of term.

## Portal quickest for EHC requests

At the start of the academic year, Headteachers and SENCOs received a schedule of Requests for EHC Assessment for students with High Needs Funding.

The SEND Casework team is still awaiting a number of requests, which are due to be received by the end of December.

The SEND Professional Portal is the quickest way to submit Requests, together with the necessary SEND Support Reviews. The link is below and currently works best in Internet Explorer.

[https://emsonline.somerset.gov.uk/ProfessionalPortal\\_LIVE/Account/Login](https://emsonline.somerset.gov.uk/ProfessionalPortal_LIVE/Account/Login)

Got a story for us? email [azdoyle@somerset.gov.uk](mailto:azdoyle@somerset.gov.uk)

